

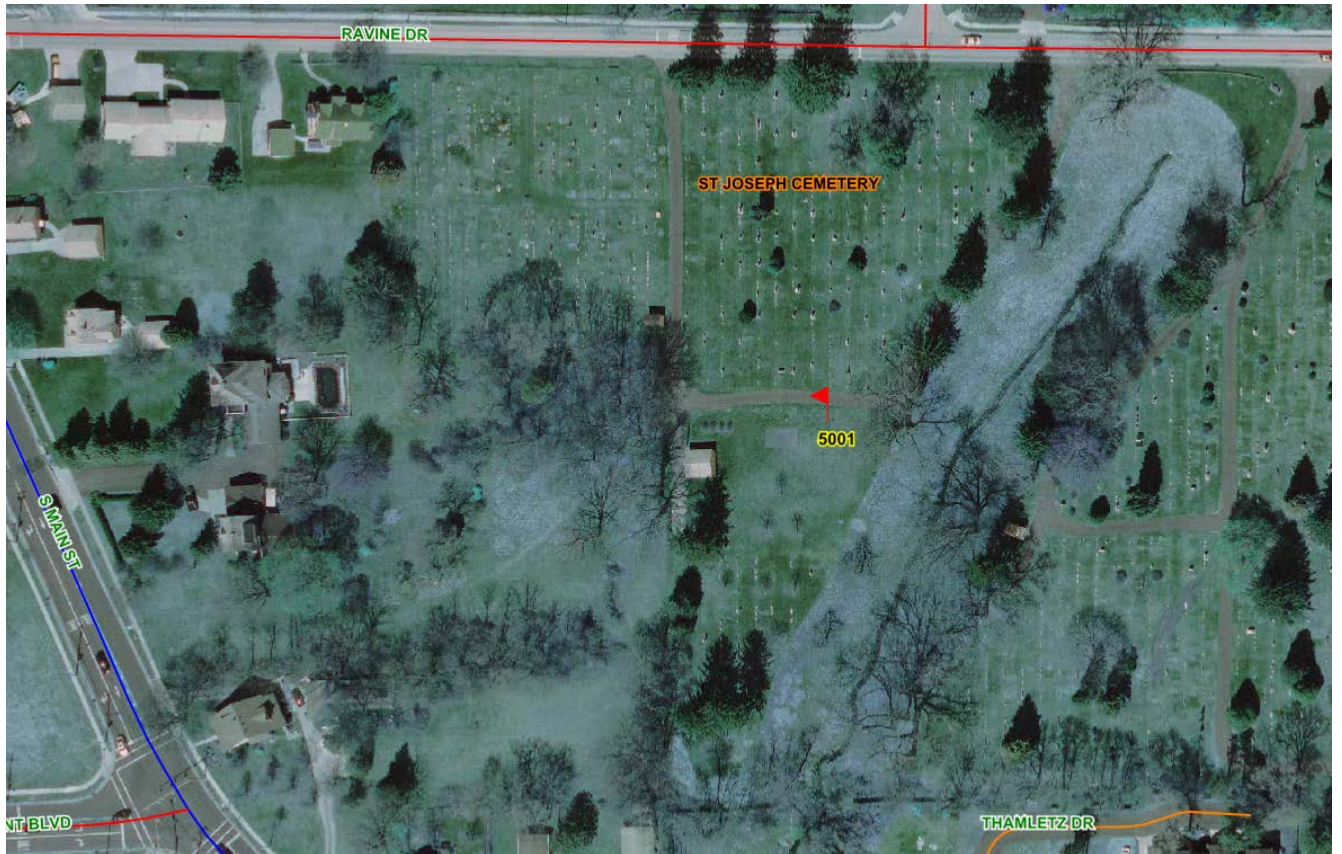
COUNTY: Lucas County, Ohio

POINT NAME: 5001

POINT TYPE: DDTI BASE

DESCRIPTION: 5001 is located in Sylvania at the St Joseph Cemetery on Ravine Dr. The point is set 290 ft south of the Ravine Dr centerline and 90 ft east of the cemetery maintenance garage.

POINT TYPE: 18" Plastic Stake with 1 3/4" cap stamped 5001



BASE: 5001

Horizontal Datum: NAD 83 (1999)

Vertical Datum: V NAVD 88

Projection: State Plane 83

Zone: Ohio N

Geoid Model: Geoid 99

Geodetic Coordinates

N 41-42-34.30976 W 83-41-56.13000

Elevation

State Plane Coordinates

Meters N 227544.6225

E 500220.6517

Ellipsoid Ht.

Meters

US Feet

US Feet

N 746535.9823

E 1641140.5881

Geoid Ht.

164.713

540.396

Orthometric Ht.

-35.240

-115.617

199.953

656.012